

Shop Talk

Facilities Management

Duke University

Building Tomorrow's Duke Today

October 2012

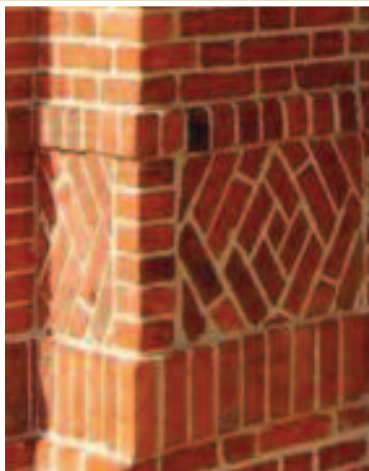
Message from the VP

Attending the Service Employee Awards luncheon is one of my favorite duties. Being in the same room with 79 employees representing over a thousand years of such diverse expertise gives me comfort that I'm in the right place and it makes me proud to be a part of Duke Facilities. The type of work we do as a Department makes Duke a special place. The fact that Duke is considered a top 10 University in national rankings has to do as much with its facilities as it does with the quality of teaching, caliber of students and success of the athletic teams. The faculty, staff and students who choose Duke do so because we make the campus an attractive place. Coach Cutcliffe reinforced that when he recently told the housekeepers at their Appreciation Luncheon that were in the business of educating our youth and that their role was no less important than the professors. Our work is vital to the success of the University and I take great pleasure at being able to honor that work by hosting the Employee Service Awards Luncheon year after year.

John Noonan
Vice President, Facilities

EAST CAMPUS STEAM PLANT WINS MORE AWARDS

The East Campus Steam Plant was recently awarded the South Atlantic Brick Award and the South Atlantic AIA Design Award. They're the 15th and 16th awards given to the plant, adding to the previous awards in sustainability, architecture and construction.



CONGRATULATIONS TO THE SEPTEMBER EMPLOYEES OF THE MONTH

Last month FMD implemented a new award program which includes the Employee of the Month Award. Five employees from each area within FMD (Building Maintenance, Engineering and Utilities, Grounds/Recycling/Sanitation/Marine Lab, Housekeeping, and Project Management/Business Services/HR) receive a gift card to Duke Dining or Duke Stores as a way of saying "thank you" for a job well done. Here are September's winners, along with a note from their nomination form:

- **Joey Bagbey**, utility operator, Utilities and Engineering: "Joey stepped in when a coworker became sick and has proven himself to be an essential member of the Steam and Chilled Water Operations team."



Joey Bagbey

- **BJ Janney**, HVAC and refrigeration specialist, Preventive Maintenance Shop: "BJ finishes ahead of schedule and helps out when others are behind. He takes the initiative to ensure that all drawings for East Campus are updated."



BJ Janney

- **Leon Johnson**, senior sanitation equipment operator, Sanitation and Recycling: "Leon consistently exhibits a positive attitude that makes him a joy to work with and shows initiative regarding his job responsibilities."



Leon Johnson

- **Sylvia Nelson**, housekeeper, University Housekeeping: "Sylvia has received compliments from customers in three different buildings and she is always willing to help out wherever it is needed."



Sylvia Nelson

- **Ray Walker**, staff architect and project manager, Project Management: "Ray showed a positive attitude and took on additional responsibility while overseeing the Duke Chapel repair. On a Sunday he worked from 7 a.m. past 1 a.m. the next day and was back in the Chapel at 7 a.m. Monday morning."



Ray Walker

DUKE CHAPEL REOPENS TO PUBLIC THANKS TO FMD



Lee Duffy at work putting the Chapel back together again.

How many FMD employees does it take to change a light bulb in Duke Chapel? The answer is three: one person to lower the chandelier and two people to lift the chandelier, clean it, and replace the 17 bulbs in each fixture.

During the Chapel's ceiling inspection last month, three of the 100-pound chandeliers had to be taken out to make room for

scaffolding. Abiathar Wade, Ron Hurdle and Tom Huff had the job of getting the chandeliers back in place for the reopening. The chandeliers had to be rolled out of storage on a dolly, the chains were lowered using pulley, cable and crank from the space between the ceiling and roof, accessible by a catwalk. Before the use of radio communication, the person lowering the cable would know when to stop by a piece of electrical tape marking the spot. A few years ago FMD made the switch from incandescent bulbs to compact florescent light bulbs. The energy used decreased by two-thirds and the amount of time between changes is now two to three weeks instead of one.



Tom Huff and Abiathar Wade test bulbs before Ron Hurdle cranks the chandelier back into place.

Special thanks to:

Structural Trades staff Lee Duffy, Robert Hester and Vernon Lockamy, who had the task of reinstalling the Chapel pews after they were removed for the renovation. It took them two days to secure each pew to the slate floor.

Ray Walker worked from start to finish as the project manager for the Chapel inspection. During the time when the Chapel was closed, his shortest day was 12 hours. On the day the Chapel's floors were refinished, he worked a 17 hour day.

FMD CELEBRATES 1,075 YEARS OF SERVICE

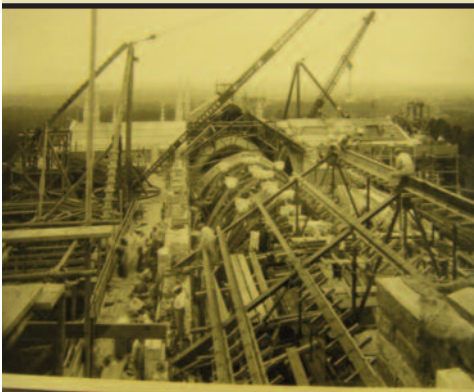
Over the last year, 47 FMD employees and 41 University Housekeeping employees hit a five year milestone in their career at Duke. Together, their combined experience working at Duke accounted to 1,075 years. FMD honored these employees by hosting a lunch at the Doris Duke Center.



Five years of service (left to right): Maria Martinez, Sarah Burdick, Todd Allen, Lee Rink, Arwen Buchholz, Russell Thompson, Gregory Padmore, B. Jeanette Douglas, Rikkia Smith, BJ Janney, Steve Carrow, Lee Duffy, Dave Stainback, Floyd Williams, Steve Palumbe. Not pictured: Chris Andrews, Joseph Bagbey, Chris Ball, James Blake, James Brogdon, Felipe Domingues, Thomas Eatmon, Wuo Gorgbooyee, Adem Gusa, Darius Haley, Snodine Harris, Thomas Huff, Delbroah Jones, Gloria Jones, Leroy Kithcart, Donald Lane, Mike Lane, Lisa Liles, Chris Logan, Bill McCraw, Drago Mitchell, Mirna Trejo, Patricia Valdovinos, Linda Ware.



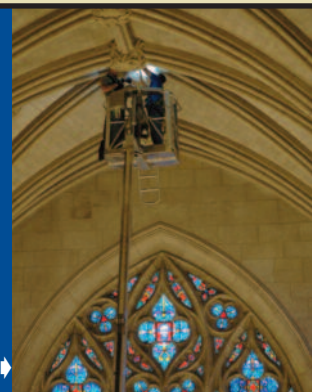
10 years of service (left to right): Larry Dunkins, Roy Tyler, Carla Frye, William White, Brenda Harris, Marnia McMillan, Stephanie Smith, Kevin Brinn, Deborah Cherry, Willie Rigsbee. Not pictured: Lamont Ballentine, Barry Burnet, Flor Castro, Sheldon Cole, Lesbia Erazo, Savannah Hall, Ramona McAdams, Everline Pearley.



Fun Fact:

The engineering firm Wiss, Janney, Elstner Associates were hired to inspect the Chapel ceiling. They are the same company used to inspect the Washington Monument and National Cathedral after the earthquake last year. They used original construction photos from the library archives to help them in their assessment.

Tools of the trade for ceiling inspectors: a flashlight and an aerial lift. ➔





15 years of service: Oscar Dantzer, Tiffany Waller, Marrio Johnson, James Burton, Darryl Lockley, Elias Mercado, Jimmie Banks. Not pictured: Shamika Hailey, Paula Upchurch, Georgianna Watson.

20 years of service (not pictured), Barbara Allen, Julius Fogg, Angela Turrentine, Michelle Vaughan.



30 years of service: Dennis Woody and Ron Djuren. Not pictured: Lessie McClamb and Keith Stewart.

35 years of service (not pictured), Dwight Coffin, Robert Friedman.



25 years of service (left to right): Charles Graham, Barry Clark, Artris Arnette, Roosevelt Hall, Tim Adams. Not pictured: Cynthia Robinson, Aurel Selezeanu, and William Summerlin.



40 years of service: Vernon Lockamy. Not pictured: Judy Burton.

HOUSEKEEPERS RECOGNIZED DURING INTERNATIONAL HOUSEKEEPING APPRECIATION WEEK

The Fuqua School of Business also recognized two housekeepers during Housekeeping Appreciation Week. Congratulations to Odilia Aguilia and Jose Penna.



**Got a
Shop Talk Update
or Suggestion?**
Contact
Sarah Burdick
at (919) 660-2519
or [sarah.burdick@
duke.edu](mailto:sarah.burdick@duke.edu)



William White, Bobby Smith and Claudius A. Davis wait in line at the Housekeeping Appreciation picnic held at Duke Gardens on Sep. 14.

Safety Zone

DEFENSIVE DRIVING COURSE TRAINING IS COMPLETE

When OESO and Corporate Risk updated Duke's vehicle safety policy earlier this year, one of the new requirements was that any Duke employee who had to drive a licensed Duke vehicle was required to take the National Safety Council's defensive driving course. As a result, FMD has had over 230 employees complete this one-time training, including over 150 employees in one of Smith Warehouse's computer labs.

SAFETY INCIDENT REVIEW UPDATE

Since we last reviewed the Facilities safety incidents that resulted in the need to file an A-016 "Report of Injury/Illness" in August, we had one incident occur that required review. An employee suffered a sprain and due to work restrictions, it resulted in a DART (Days Away/Restricted Time) occurrence. For the second quarter in a row, the DART rate is 3.56, which continued to lower the calendar year's rate to 4.67.

For University Housekeeping employees, there were six injuries that resulted in an A-016 being filed. Two of the injuries were caused by slips/trips/falls, three employees suffered a sprain/strain/bruise, and one person suffered a cut. Unfortunately, three of these injuries were classified as DART occurrences due to work restrictions or employees placed out of work by medical officials. During the third quarter, Housekeeping's DART rate is 5.30 and for the calendar year the DART rate is 2.37.

Remember - attention to duty and details while on the job will keep us all safe at work.



Facilities Management Fall Golf Tournament

WHO: FMD Employees, Duke Employees, Vendors, and Contractors

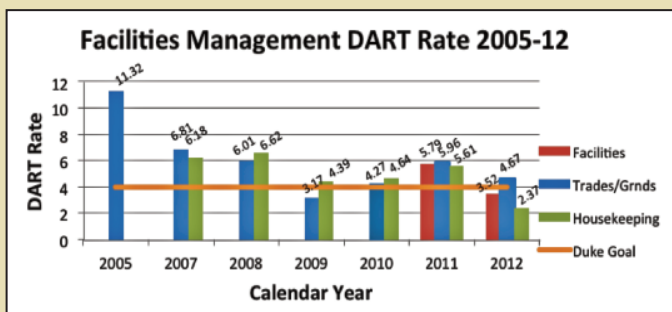
WHAT: 4 person Superball Golf Challenge

WHERE: Lochmere Golf Club
2511 Kildaire Farm Road
Cary, NC 27511
919.500.5593
<http://www.clubcorp.com/Clubs/Lochmere-Golf-Club>
30-35 minutes from campus

WHEN: October 25th shotgun start @ 12:30

HOW: Please respond ASAP to Tom Young @ tom.young@duke.edu to enter. Make sure you include what you normally score. Please pay entry fee to Tom Young (chiller plant) or Sarah Burdick (Smith Warehouse) by 10/19/12. Price: \$32 Includes: golf, range balls, and prizes. Cash only!

Lunch on your own: Made to order food and beverages will be available for purchase at the grill at Lochmere.



Our Mission: To provide excellence in planning, design, construction, operation and maintenance for facilities, grounds and utilities in a customer-focused, efficient and sustainable manner.