

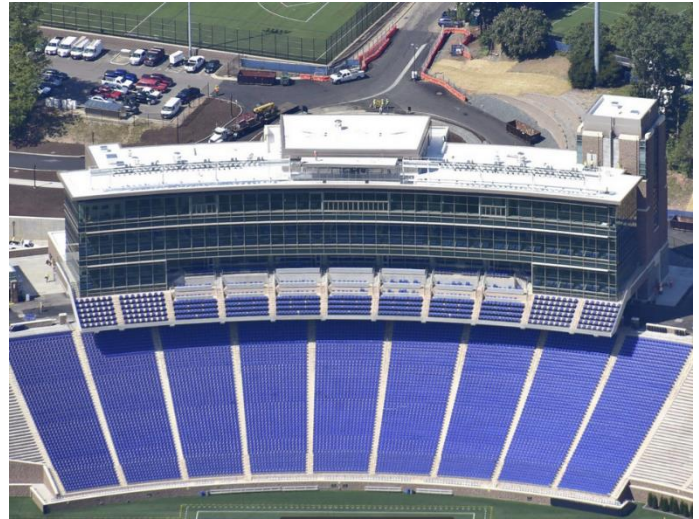
Blue Devil Tower

Project Scope:

The Finch-Yeager Building was demolished and replaced with Blue Devil Tower, a new 195,000 sf building housing the President's suite, Iron Duke Suites, premium interior and exterior lounge seating, dining and concession facilities, stadium operation spaces, broadcast command center, camera platforms, coach's boxes, retail spaces, offices and restrooms.

Program:

Blue Devil Tower provides 4 levels of suites, concessions, retail, lounge and dining facilities, press suites, coach's suites, game day operation suites and restrooms above the aforementioned concourse improvements. The primary entrance will be by direct connection to Bassett Drive via a pedestrian bridge. The project included site utilities, stadium field lighting, broadcast capabilities and new signage.



Architecture & Engineering:

Beck Architecture LLC <http://www.beckgroup.com>, was been selected by the President due to the firm's combined expertise in the design of high quality collegiate athletic facilities and successful execution of highly complex construction projects. Beck has a proven track record at Duke as the designers of the Michael W Krzyzewski Center for Duke Athletics and Pascal Fieldhouse. Their international portfolio illustrates their capacity to handle large architectural projects requiring extensive coordination.

<i>Gross Square Feet</i>	<i>194,460</i>
<i>Construction Start</i>	<i>February 2015</i>
<i>Occupancy Date</i>	<i>August 2016</i>
<i>LEED Goal</i>	<i>Silver</i>
<i>Architect</i>	<i>Beck Group</i>

Sustainability:

Sustainable features/practices in this project include but are not limited to, water conservation through use of waterless, or ultralow flow plumbing fixtures, energy conservation through high efficiency mechanical system components, digital scheduling, better insulation values on building envelope components, energy star appliances, use of lighting control occupancy sensors, daylight harvesting and dimmable lighting systems, and high efficiency light fixtures. Material conservation will be achieved through use of locally sourced, recycled, and renewable materials.

[Video: All-Access Tour of Blue Devil Tower](#)

